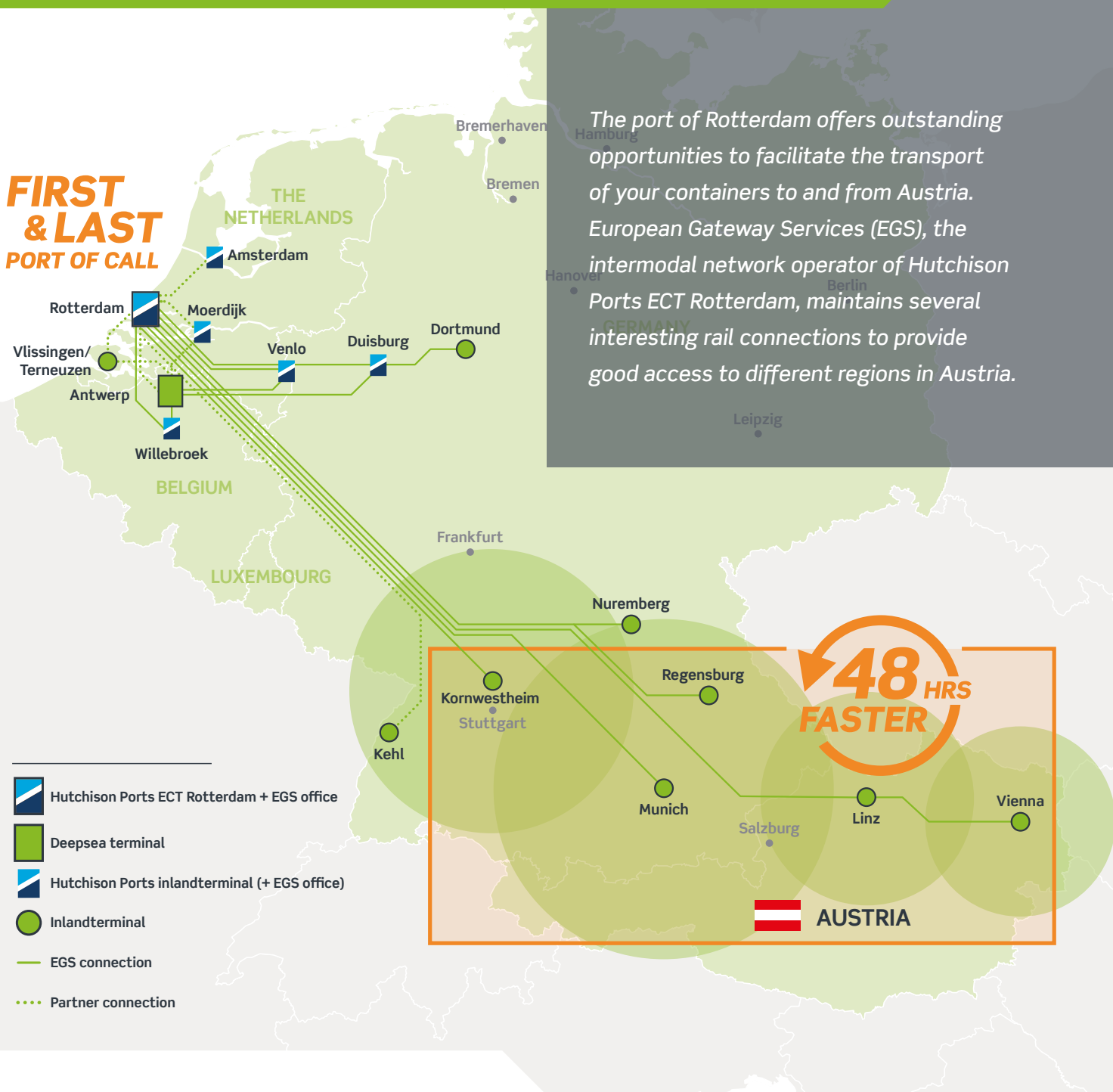


# Rotterdam, the port of Austria

## Austria-Rotterdam, Rotterdam-Austria

**FIRST  
& LAST  
PORT OF CALL**



The port of Rotterdam offers outstanding opportunities to facilitate the transport of your containers to and from Austria. European Gateway Services (EGS), the intermodal network operator of Hutchison Ports ECT Rotterdam, maintains several interesting rail connections to provide good access to different regions in Austria.

With our rail connections to **Linz** (4x per week), **Vienna** (via Linz, 3x per week), **Regensburg** (2x), **Munich** (3x) and **Kornwestheim** (3x), we serve the regions of Upper Austria, Lower Austria, Salzburgerland, Tyrol and Vorarlberg (map).

The Austria-Rotterdam shuttles are suitable for maritime and continental cargo. In Rotterdam, all deepsea terminals at the Maasvlakte are served: **Hutchison Ports ECT Delta**, **Hutchison Ports ECT Euromax**, **Hutchison Ports Delta II**, **APMT-2** and **RWG**. In the city area, **RSC Waalhaven** is called at.

### Time savings and fiscal benefit

A major advantage of the route via Rotterdam is the time savings. Many deepsea shipping lines use Rotterdam as their first and/or last port of call in Europe. To and from Austria, this results in extremely favourable transit times.

An additional advantage of the route via Rotterdam is the fiscal benefit for import that is available in the Netherlands. Via a so-called fiscal representation, payment of VAT can be deferred until the moment the cargo is delivered at the final destination.

### Complete service provision via one-stop-shop

In addition to its direct connections by rail, European Gateway Services offers a wide range of supplementary services, such as:

- first and last mile trucking;
- customs facilities, including T1 documents;
- customer portal;
- excellent knowledge of the deepsea terminals in Rotterdam, as part of ECT;
- port-to-door transport under one roof.

EUROPEAN  
GATEWAY  
SERVICES

[www.europeangatewayservices.com](http://www.europeangatewayservices.com)

### Interested in the possibilities we have to offer?

For questions about our service provision to Austria, please contact **John Monteiro**:

+31 (0)181 - 278513  
john.monteiro@ect.nl

For specific information about rates and bookings:

+31 (0)181 27 8195  
info@europeangatewayservices.com

Current schedules are available at:  
<https://www.europeangatewayservices.com/en/services/intermodal-services>